



# SMITH-EMERY LABORATORIES

An Independent Commercial Testing Laboratory

781 E. Washington Boulevard - 2nd Floor Los Angeles, California 90021 ♦ (213) 745-5333 ♦ Fax (213) 749-7232

Proj. No.: 41546  
Lab. No.: T-13-123

September 9, 2013

Client: **BAUTEX SYSTEMS, LLC**  
5602 Central Texas Drive  
San Marcos, TX 78666  
Attn: Paul S. Brown

Project: **BAUTEX Composite Wall Panel**  
Subject: **Pull-Off Strength Test**

Test Procedure: ASTM D 4541-02: Test Method for Pull-Off Strength of Coatings Using Portable Adhesion Tester

Equipment Used: Self-Aligning Adhesion Tester (DeFelsco PosiTest Pull-Off Adhesion Tester, Model AT-P)

Source: 16" x 16" x 2" Composite Wall Panel Sample

## Report of Test

A 3/4" dollies were epoxied on the surface of the sample and was dried for 24 hours and were tested using the PosiTest Pull-Off Adhesion Tester. Perimeter of each dolly was scored prior to pull test.

Sample No.	Test No.	Pull-Off Strength	Mode of Failure
1	1.	290 PSI	Substrate
	2.	300 PSI	Delamination on the Net
	3.	250 PSI	Substrate
	<b>Average :</b>	<b>280 PSI</b>	
2	1.	320 PSI	Substrate
	2.	270 PSI	Delamination on the Net
	3.	320 PSI	Substrate
	<b>Average :</b>	<b>300 PSI</b>	
3	1.	280 PSI	Substrate
	2.	210 PSI	Substrate
	3.	190 PSI	Substrate
	<b>Average :</b>	<b>230 PSI</b>	

Respectfully Submitted,

SMITH - EMERY LABORATORIES

Janeth Quintero  
Registered Civil Engineer No.: C 73066  
Registration Expires: 12/31/2014



jb

- Materials Tested Comply With Specifications.
- Materials Tested Did Not Comply With Specifications.
- No Established Criteria for Acceptable Limits.
- For Information Only

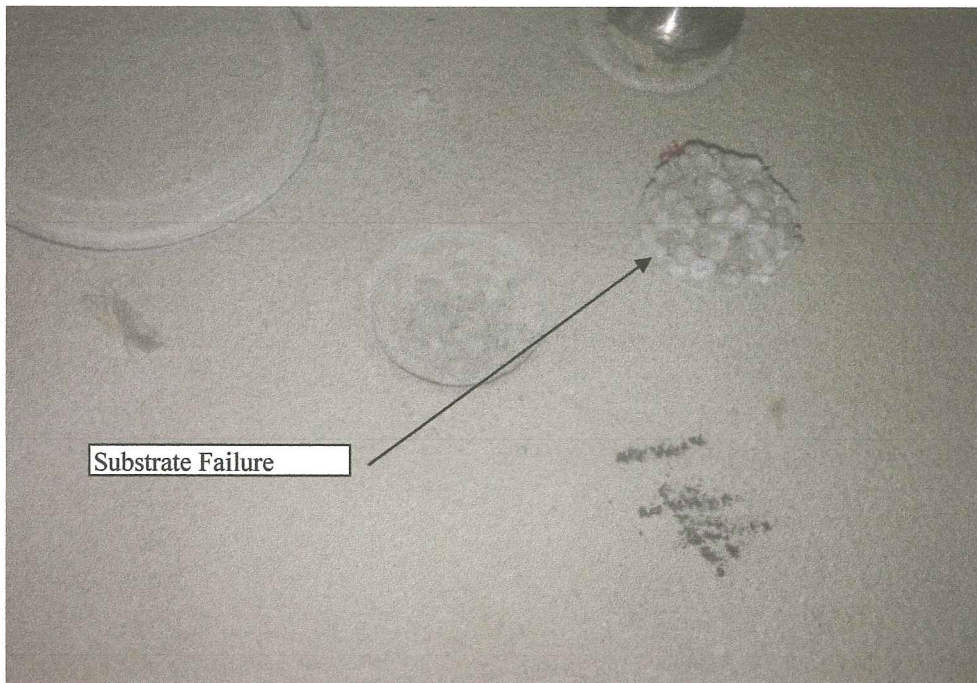
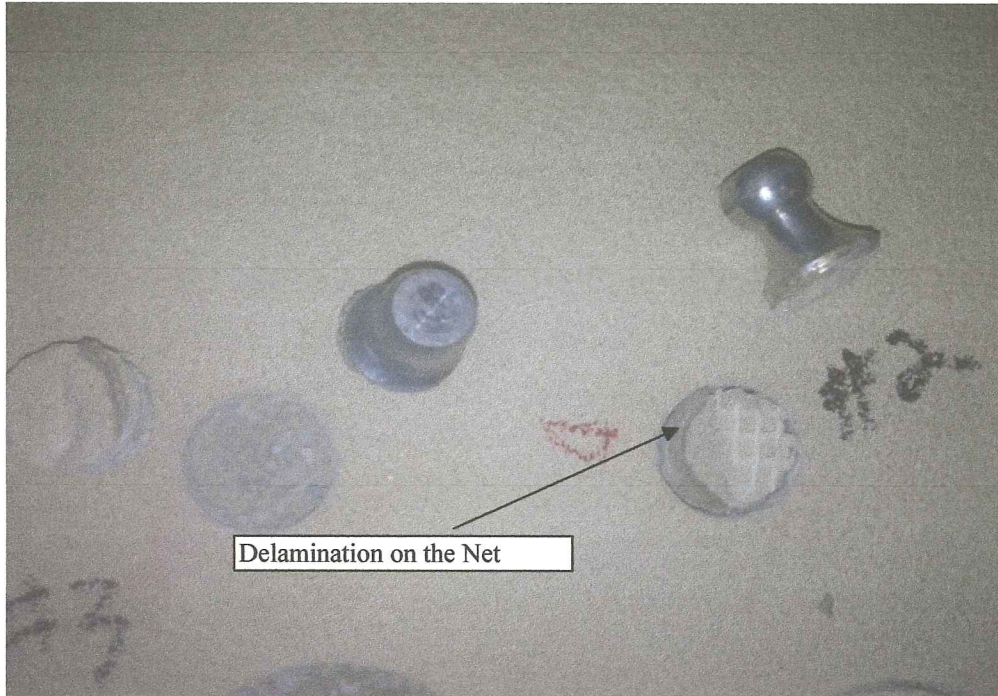
CC: BAUTEX SYSTEM, LLC; SMITH-EMERY LABORATORIES



Proj. No.: 41546  
Lab. No.: T-13-123

September 9, 2013

### Failure Mode Pictures



CC: BAUTEX SYSTEM, LLC; SMITH-EMERY LABORATORIES